



Shaler Area School District

## SCOTT PRIMARY SCHOOL



Project Progress  
February 16, 2018



# MEP's Continue



**Massaro**  
CM SERVICES, LLC





# MEP's Continue



**Massaro**  
CM SERVICES, LLC



# Drywall Continues



**Massaro**  
CM SERVICES, LLC





# Drywall Continues



**Massaro**  
CM SERVICES, LLC



# Cement Board Continues

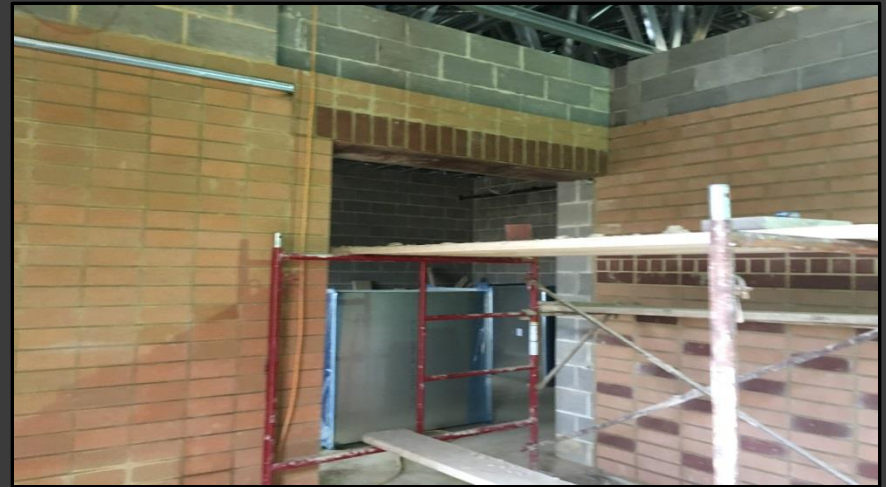


**Massaro**  
CM SERVICES, LLC





# Interior Masonry is Underway



**Massaro**  
CM SERVICES, LLC



# Preparation for Painting







# Stage @ Gymnasium



**Massaro**  
CM SERVICES, LLC



# Gutters & Downspouts Have Started



**Massaro**  
CM SERVICES, LLC





# North Elevation View

February 16, 2018



**Massaro**  
CM SERVICES, LLC



# South Elevation View

February 16, 2018



**Massaro**  
CM SERVICES, LLC





# Pull Planning

## Week of February 12, 2018

PRIME	MON.	TUES.	WED.	THUR.	FRI.	S.O.G.
A-1	<ul style="list-style-type: none"> <li>- MP AREA A</li> <li>- R.R. Piping</li> <li>- Wire Into C</li> <li>- END R1 AREA D</li> </ul>		<ul style="list-style-type: none"> <li>- Piping In Lobbyway</li> </ul>			<ul style="list-style-type: none"> <li>- Begin R1 AREA A R.R.</li> <li>- Lobbyway R1 Piping Endline</li> </ul>
NELLO	<ul style="list-style-type: none"> <li>- Windows in AREA C</li> <li>- DRAIN B DRAINERS</li> <li>- GROUND DRAIN D DRAINERS</li> <li>- PUMP DRAIN PUMP</li> <li>- TENT STAIRWELL AREA C</li> </ul>		<ul style="list-style-type: none"> <li>- PA ROOFING DRAIN</li> </ul>	<ul style="list-style-type: none"> <li>- PA ADMIN ROOF?</li> </ul>		<ul style="list-style-type: none"> <li>- Begin Windows in AREA C</li> <li>- Begin Roofing in Admin</li> <li>- Complete Louvers in AREA B</li> <li>- Complete AREA D STAIR DETAIL</li> </ul>
RAM	<ul style="list-style-type: none"> <li>- Framing in AREA C RESTROOM</li> <li>- SOUND BONES FRAMING "B"</li> </ul>	<ul style="list-style-type: none"> <li>- DELIV. BOARD FOR SOUND WALLS</li> </ul>	<ul style="list-style-type: none"> <li>- HANG VEST. SOUND BOARD AREA D10 CORRIDOR</li> </ul>			<ul style="list-style-type: none"> <li>- Complete FRAMING AREA D</li> <li>- SOUND WALL R11. BOARD</li> </ul>
HARRIS	<ul style="list-style-type: none"> <li>- END MORE WALLS IN GYM</li> <li>- Complete Console</li> <li>- BRICK VEST. WALL GYM</li> <li>- GYM ENTRANCE</li> </ul>	<ul style="list-style-type: none"> <li>- Trophy Cases AREA C</li> </ul>	<ul style="list-style-type: none"> <li>- BRICK Entry Side GYM</li> </ul>			<ul style="list-style-type: none"> <li>- Complete MORE CMU in GYM</li> <li>- Frame BRICK VEST WALL GYM</li> <li>- Begin Trophy Cases in C</li> <li>- Complete GYM ENTRANCE</li> </ul>
VRABEL	OFF SITE	AREA C R.I.				<ul style="list-style-type: none"> <li>- BEGIN AREA C/D ROOF DRAINERS &amp; CH. R.I.</li> </ul>
HRANEC	<ul style="list-style-type: none"> <li>- DRAINERS</li> <li>- TAPS IN CORRIDOR</li> </ul>	<ul style="list-style-type: none"> <li>- DELIV. ADMIN DUCT</li> </ul>	<ul style="list-style-type: none"> <li>- FIVE INSTALL</li> </ul>	<ul style="list-style-type: none"> <li>- ADMIN ROOF CURBS</li> </ul>		<ul style="list-style-type: none"> <li>- LOWER DUCT @ DRAINERS</li> <li>- LOWER DUCT @ GABLES</li> <li>- ADMIN ROOF CURBS</li> </ul>
EAST WEST	<ul style="list-style-type: none"> <li>- OLD WALL PENETRATIONS</li> <li>- PIPING R1 - ADMIN</li> </ul>	<ul style="list-style-type: none"> <li>- ROOF CURB DELIV.</li> </ul>	<ul style="list-style-type: none"> <li>- ROOF CURB INSTALL?</li> </ul>			<ul style="list-style-type: none"> <li>- INSTALL CURBS AND AREA C ROOF</li> <li>- Begin Piping R1 - AREA C</li> </ul>





# NEW PRIMARY SCHOOL ON SCOTT AVE.

Scheduled Work for Upcoming Weeks

- Continue MEP Systems
- Interior CMU
- Interior Drywall
- Interior Cement Board
- Interior/Exterior CMU @ Area C & D
- Roofing



**Massaro**  
CM SERVICES, LLC